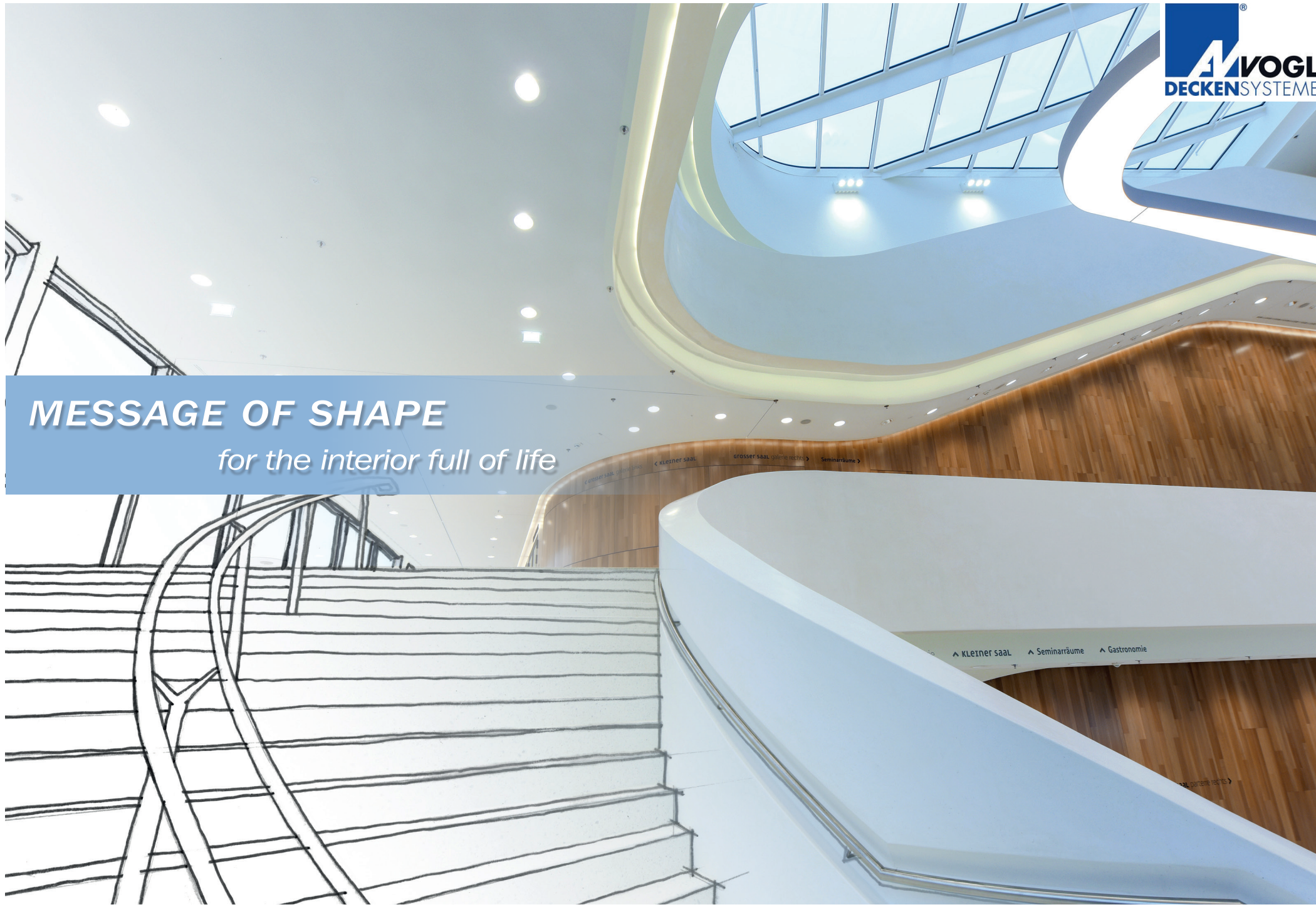


# MESSAGE OF SHAPE

*for the interior full of life*





## The interaction

*between built spaces and human beings is in the focus of the architectural draft.*

Its design language  
**decisively affects  
our sensation in the room.**

*It can make us feel comfortable or rather uneasy.*

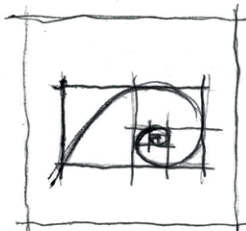
## Functional elements

*not only complement the atmosphere of the room.*

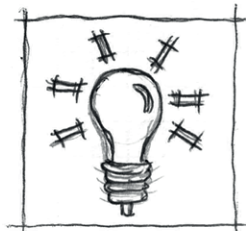
*They give it its unique **identity** thus making it so **valuable**.*



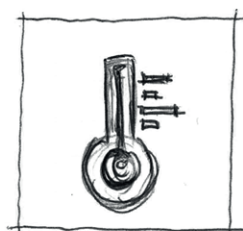
To obtain holistic interior design, plenty of different factors, such as light and room climate, shall be equally considered. The harmony created this way positively affects the human organism – both physiologically and psychologically.



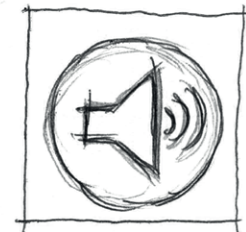
Proportion



Light



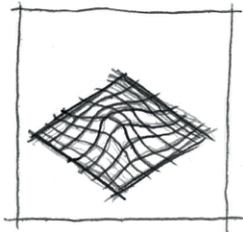
Climate



Acoustics



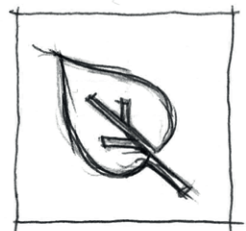
Colour



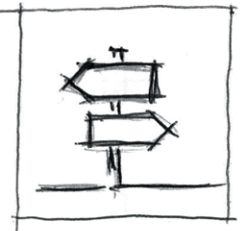
Surface



Health



Environmental  
compatibility



Orientation



And since every object, every room is unique, our individual

### **moulded components**

customised to your concepts are best suited to perfect the intended overall appearance.

---

Projects from

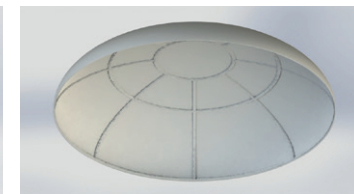
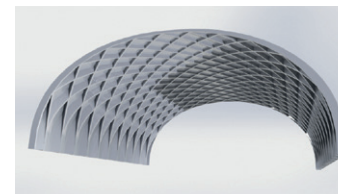
## 2D drafting to detailed 3D modelling



We offer you ready-to-use components and tailored solutions for your vision and your design. Your freedom of creativity is almost unlimited. Simple geometric or complex three-dimensional shapes – you will obtain custom-fit individual modules for the integration into your ceiling system. The high degree of pre-fabrication allows for faster installation and preserves the quality of the end result. At the same time, we always adapt our structures made of gypsum plasterboard or fibre-reinforced gypsum to your budget and your requirements.

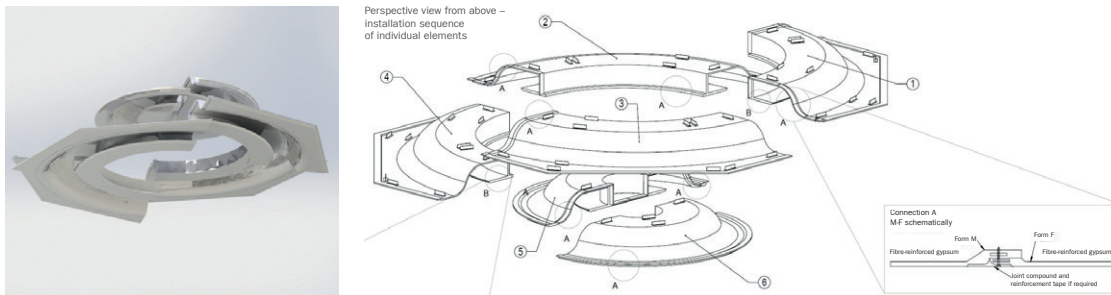
### Your benefits:

- Holistic assistance
- Customised solutions for your planning
- Advice and support in all project phases
- Optimal lighting effect and flexible design
- Time efficiency in assembly and installation

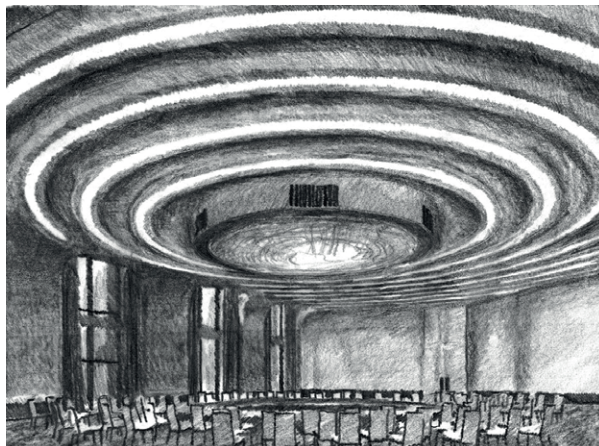


Value retention

# From drafting to implementation



To obtain an ideal illumination solution, we will design a suitable moulded component together with you. Depending on the requirement, we can opt for gypsum plasterboard or fibre-reinforced gypsum. This will allow us to realise a virtually unlimited variety of shapes.

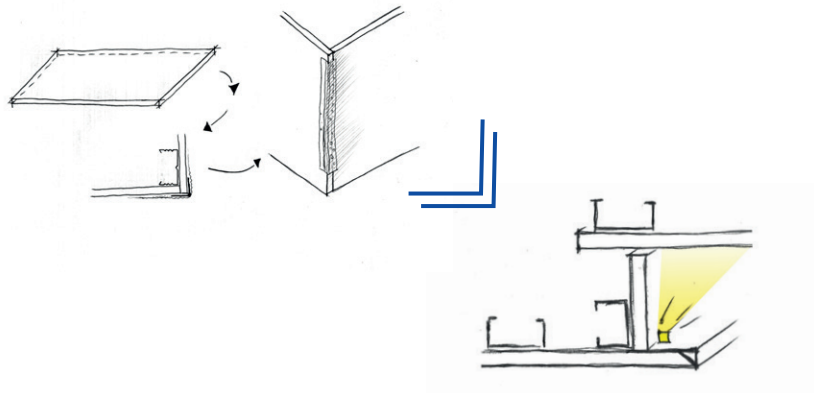


Yet in doing so, it is of utmost importance to us, to offer you the greatest possible certainty in terms of planning and expenditure. To achieve this, we set great store by detailed elaboration and practicability. Due to a high degree of pre-fabrication of our components coupled with the construction site-specific delivery, we create the perfect prerequisite for your project.

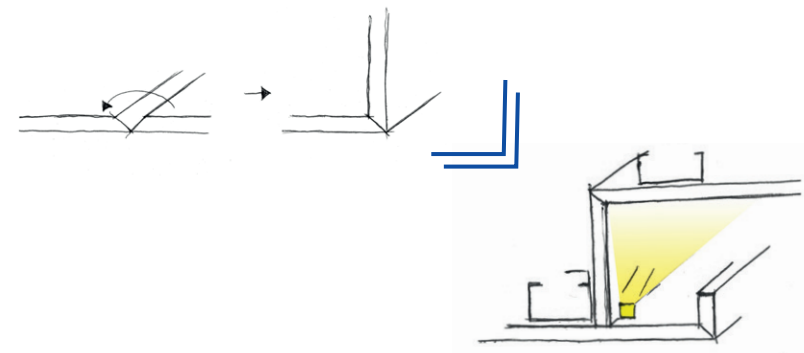
Various designs at a glance

## Edges by means of

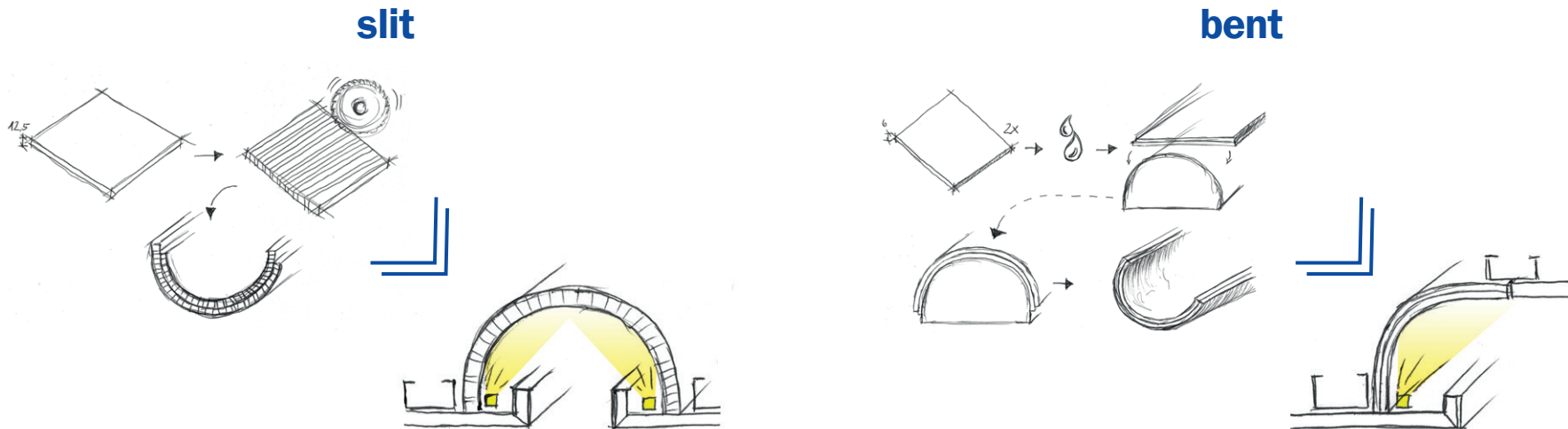
### individual components



### pre-fabricated V-cuts



By using pre-fabricated grooves, you ensure qualitative value retention already during installation. Since only custom-fit panels rather than a great many of individual components are used during on-site installation. The cardboard-clad and smooth visible edge forms an optimal surface and exact edge design to achieve precise lines in the room concept.

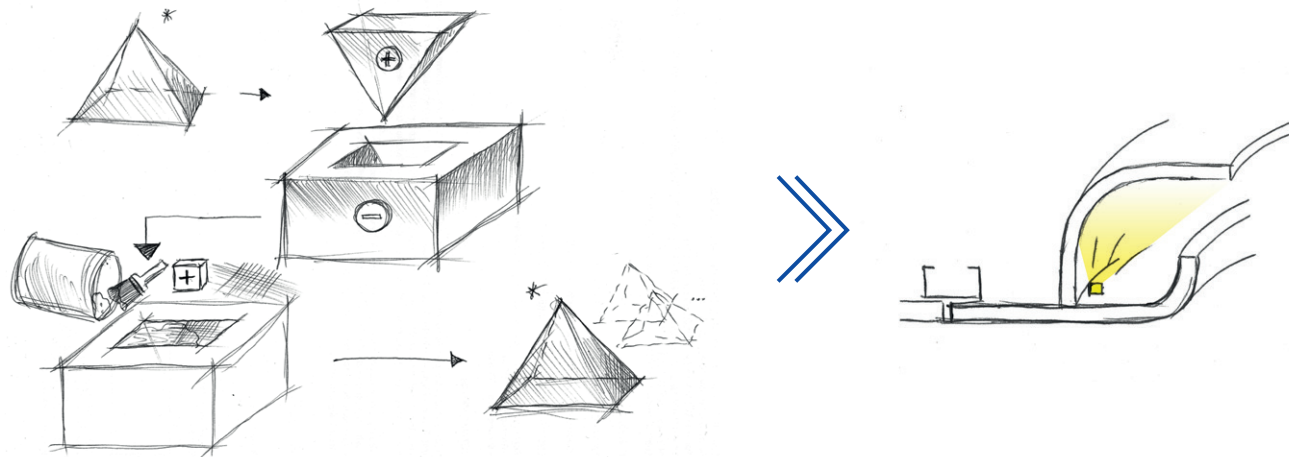


Depending on the requirement and geometry, the half shells or ceiling segments are made from either slit or curved plasterboard panels. The selection of the suitable material depends on the desired surface quality, the dimensions of the moulded component and, of course, the budget.

Various designs at a glance

## 3D free shapes made of

### fibres-reinforced gypsum



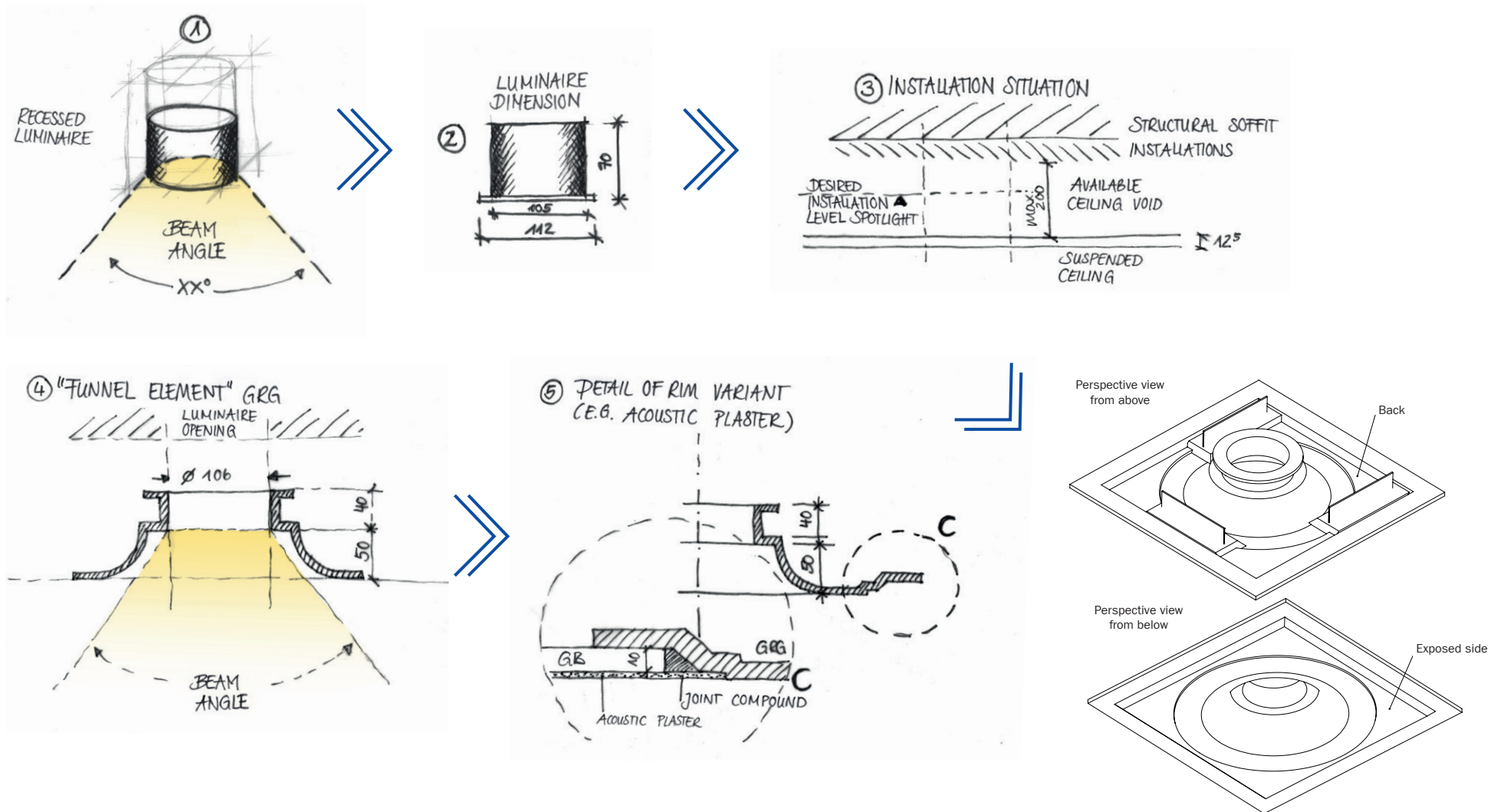
Fibre-reinforced gypsum is particularly suited for sophisticated designs and complex geometric shapes (be it two- or three-dimensional). Even organic structures can be implemented with its help.

Moulded components made of fibre-reinforced gypsum are produced from a negative form by means of a lamination process. If a project includes recurrent shapes, radii or the like, this method is particularly economical.



EXAMPLE – integral ceiling element

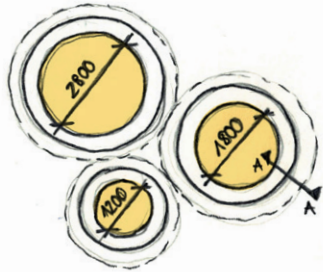
# Funnel, integrated spot



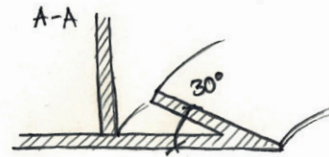
EXAMPLE – integral ceiling element

# Circular covered lighting

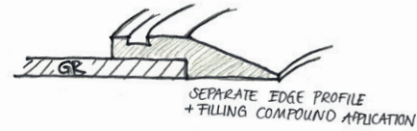
① LIGHTING DESIGN /  
IDEA 2D CIRCULAR COVERED LIGHTING



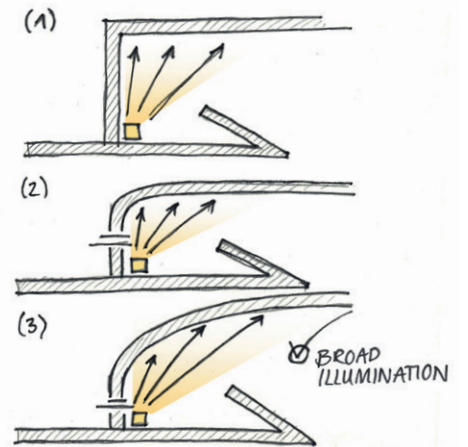
② COVERED LIGHTING  
CROSS-SECTION



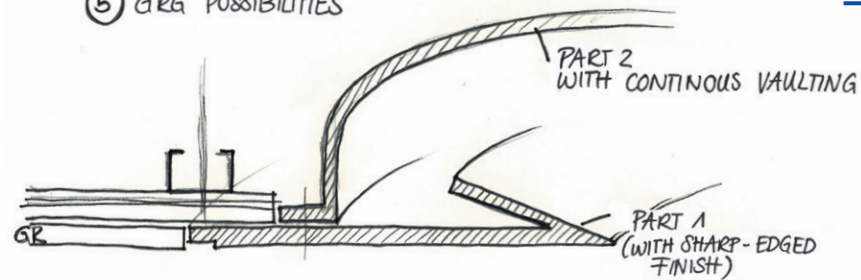
③ SHARP-EDGED  
DESIGN?



④ REFLECTOR INTEGRATION

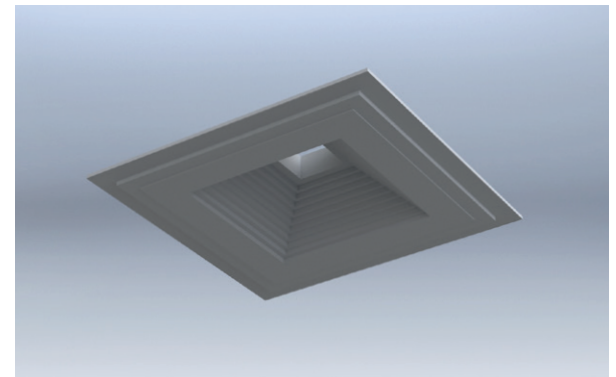
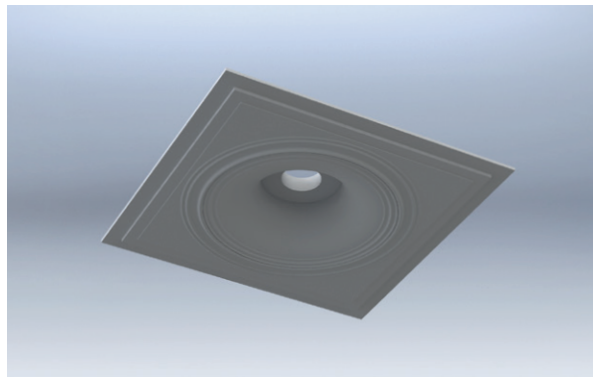
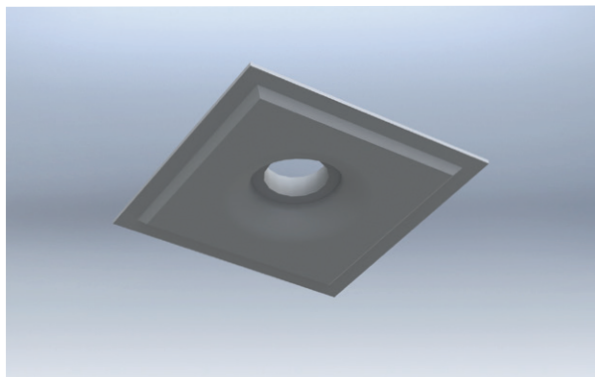
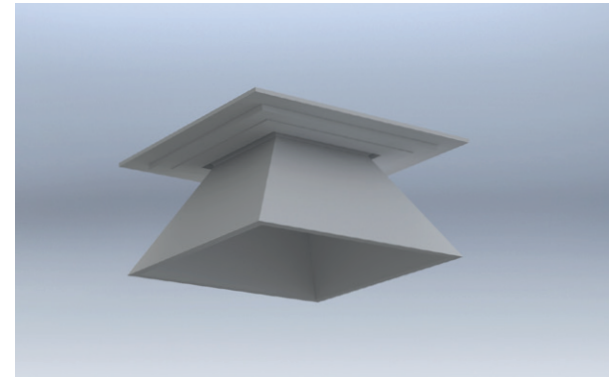
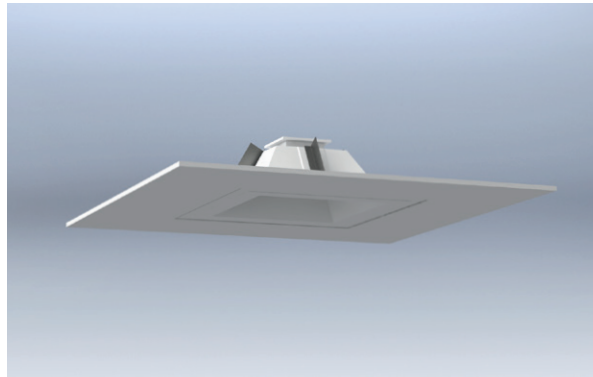
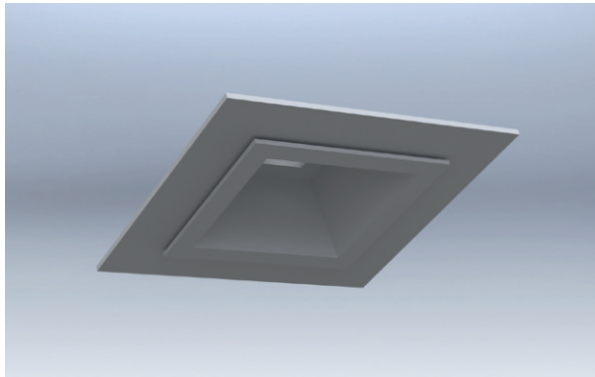


⑤ GRG POSSIBILITIES



---

EXAMPLE – integral ceiling element  
Made of fibre-reinforced gypsum



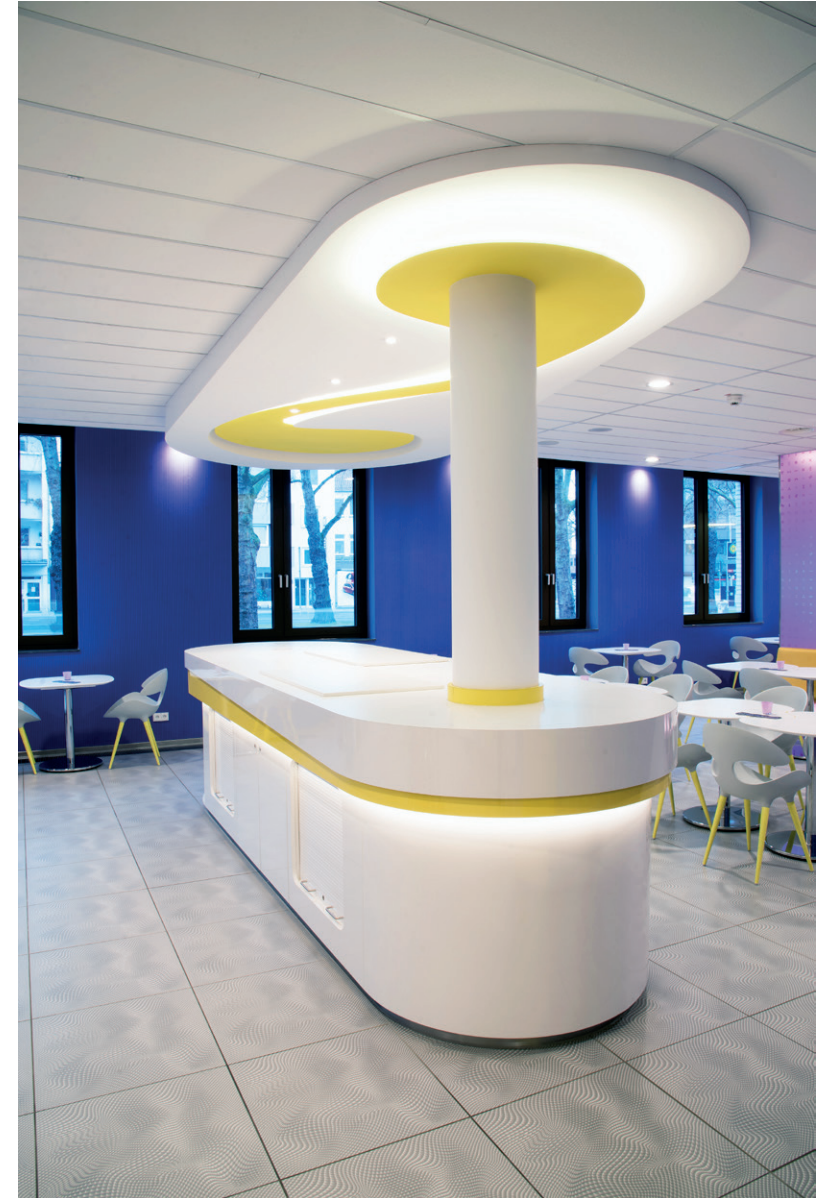
**Project:** Baader Food Processing Machinery  
**Product:** fibre-reinforced gypsum



**Project:** State Parliament of Lower Saxony  
**3D design product:** moulded gypsum plasterboard components



**Project:** prizeotel hotel  
**3D design product:** moulded gypsum plasterboard components

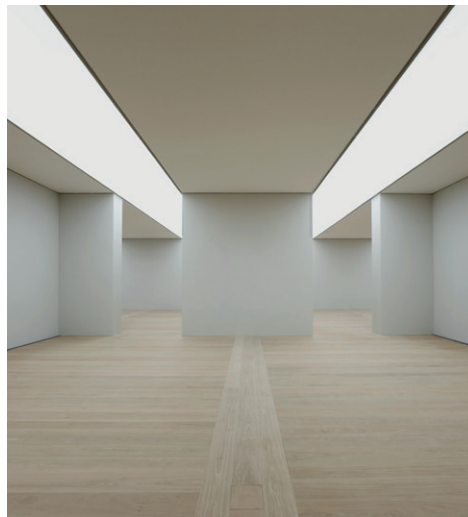


**Project:** BKK Wiener Linien health insurance  
**3D design product:** moulded gypsum plasterboard components



**Project:** The Kunsthalle Bremen art gallery  
**Illuminated ceiling product:** Rentex illuminated stretch ceiling

---





**Project:** Lago Shopping Centre in Konstanz  
**Product:** fibre-reinforced gypsum



ORB, Atelier für Lichtgestaltung

**Project:** Shannon Airport  
**3D design product:** moulded gypsum plasterboard components



**Project:** staff restaurant “franz” at F. LIST GMBH in Thomasberg  
**Product:** Toptec acoustic plaster system



**Project:** Dallmayr Lukkulus Bar in Munich  
**3D design product:** moulded gypsum plasterboard components

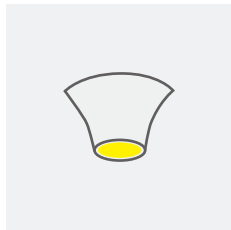
---



---

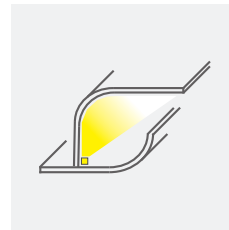
Be it linear or  
**Surface illumination**

**spot illumination**



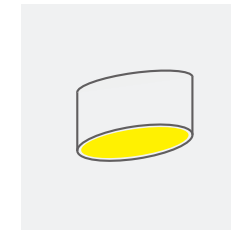
Following your technical requirements (e.g. beam angle, ceiling void), we manufacture moulded components and housings for spot illumination.

**linear illumination (direct / indirect)**



Be it light channel structures or linear moulded components for lighting integration – we will work out the optimal solution for your lighting design in close coordination with you.

**surface illumination (illuminated ceilings)**



With the help of our system partner Rentex, we will adjust our moulded components to your desired illuminated or stretch ceiling down to the tiniest detail.